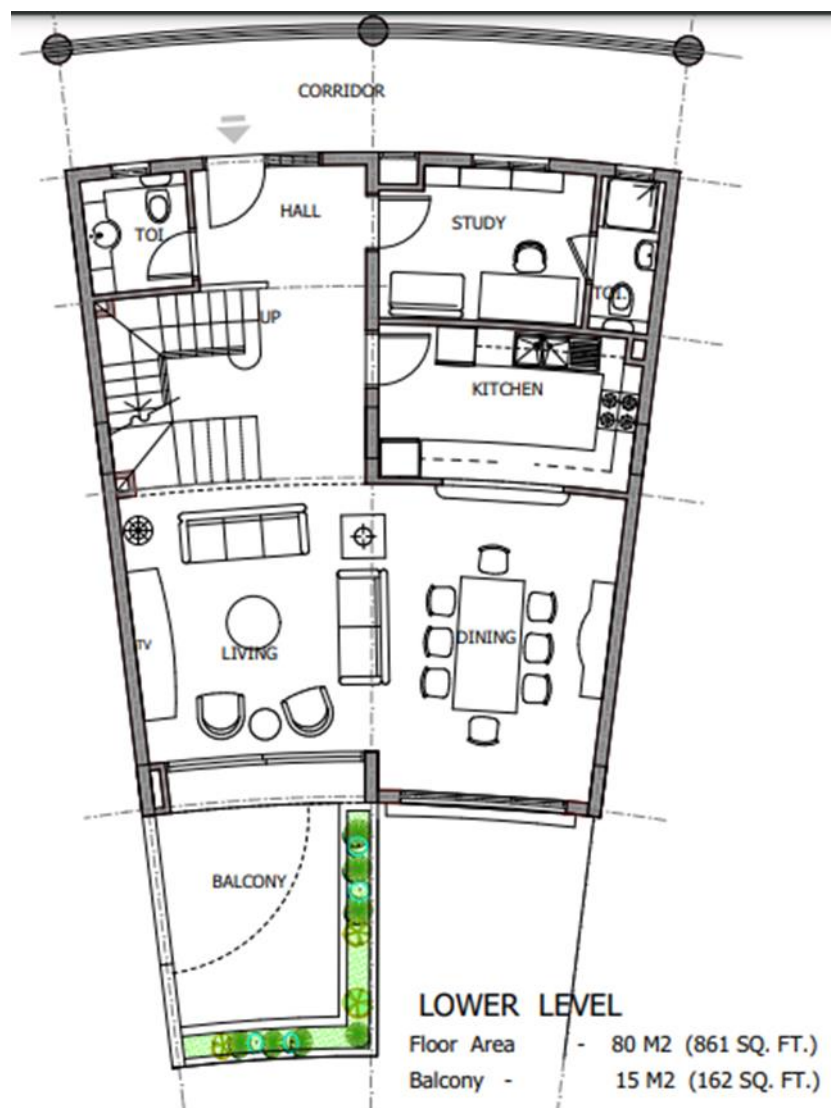
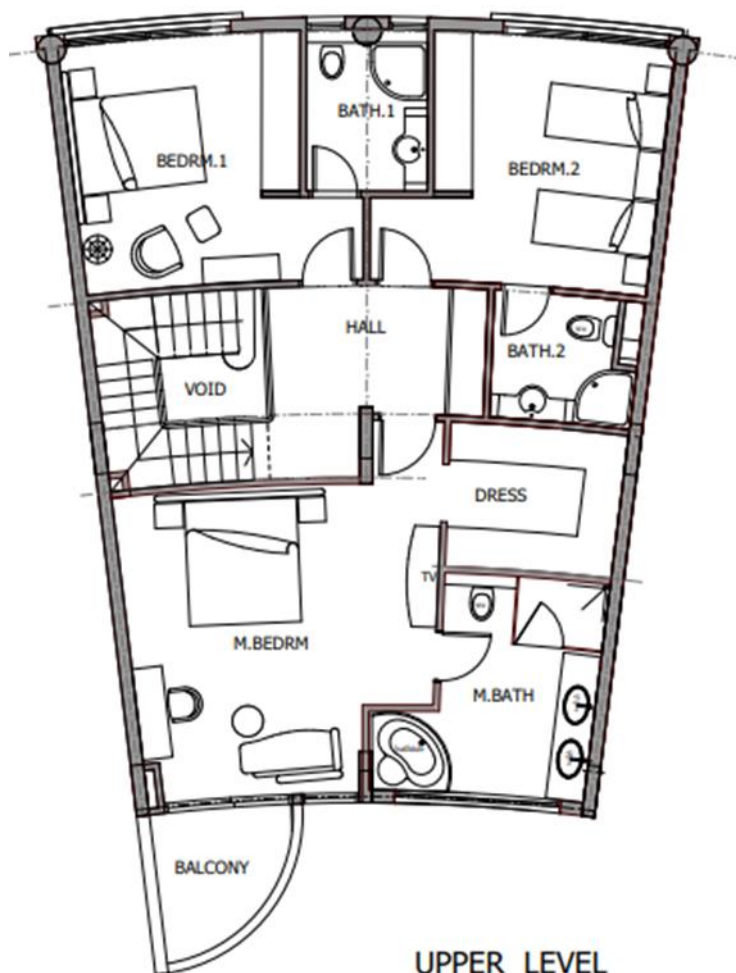


# 3 BEDROOM DUPLEX Apartment

Floor plan 203 sqm







#### UPPER LEVEL

Floor Area - 103 M2 (1109 SQ. FT.)  
Balcony - 5 M2 (52 SQ. FT.)

### 3 Bedroom Maisonette

#### (3 BR - D) Total 12 Units

Total Floor Area - 183 M2 (1970 SQ. FT.)  
Balcony - 20 M2 ( 214 SQ. FT.)  

---

Total - 203 M2 (2184 SQ. FT.) - 6 Units

(Size of terrace garden varies according to location)  
Terrace Garden (Typ.) - 17 M2 (183 SQ. FT.) - 6 Units







Apartment comes with

- Fully equipped kitchen incl of all kitchen appliances such as electrical kitchen oven, microwave, electrical kitchen hob, Fridge/Freezer
- Air Conditioner

Other public amenities:

- Basement parking
- Four Elevators
- Swimming pool
- Gym on top roof
- Relaxation Swimming pool on top roof

Extra:

Furniture can be arranged on request .

Rental pool Management agreement is offered.

Purchase payment modalities:

- 20% with signing of sales agreement
- 80% on handover of apartment

Apartment will be handed over aft 6 week from down payment.



## Some visuals of the 3 BR Duplex

### Position of Apartments



### TYPICAL VIEW FROM BALCONY



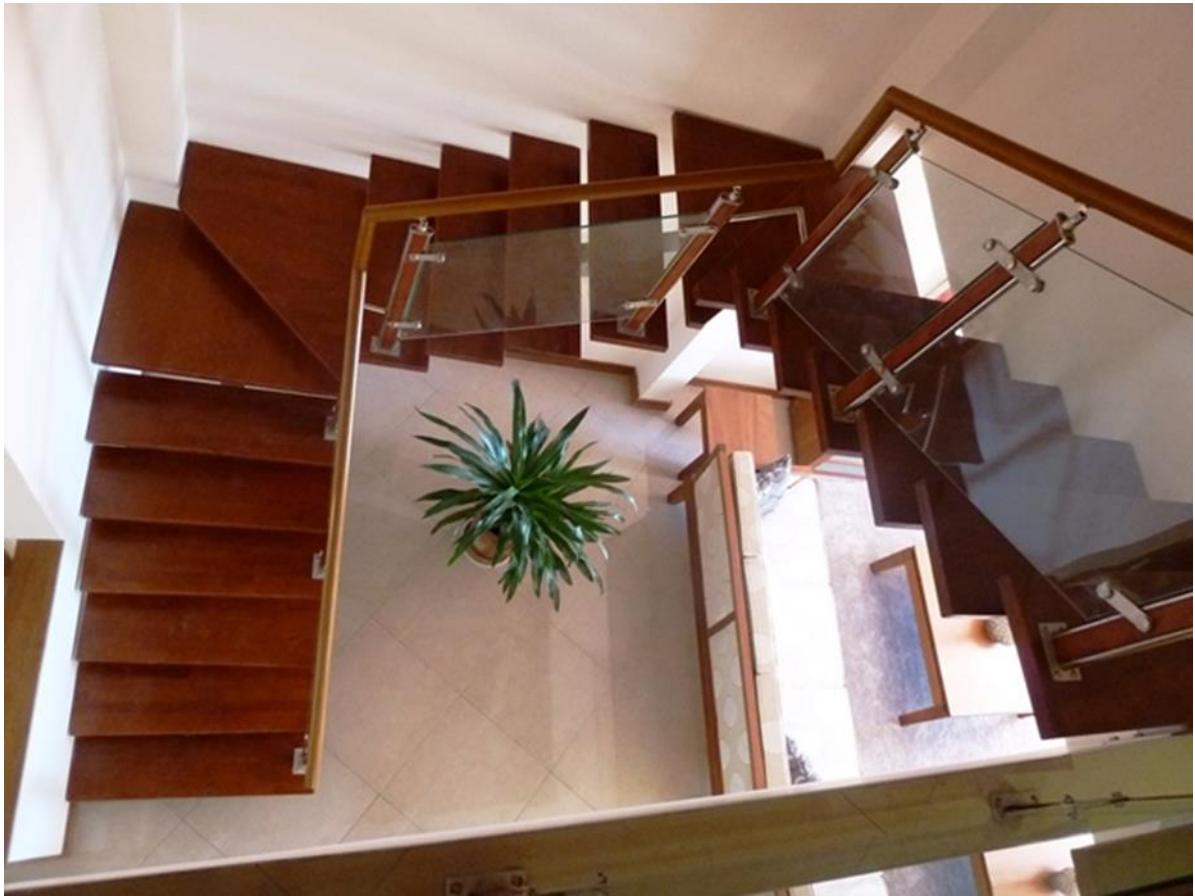


## Typical Seating/Dining area





Stairs connecting the two floors



Typical Master bedroom





**Typical Master Bathroom**



**Typical 2<sup>nd</sup> and 3<sup>rd</sup> bedroom**





## Typical Study Room (with Shower & Toilet)



## TYPICAL KITCHEN LAYOUT



For Sales

+254 706 787898

+254 722 623783

+425 714 233333

[sales@kilua.co.ke](mailto:sales@kilua.co.ke)